



171 La Salle Chadwick Street, Hunslet, Leeds, LS10 1NW

AVAILABLE 9th July 2026

A two bedroom, two bathroom apartment in the beautiful Leeds Dock area with third floor water views from a private balcony. Fully furnished and recently decorated throughout, this property offers residents luxurious city centre living whilst enjoying the quiet calm of living by the dock.

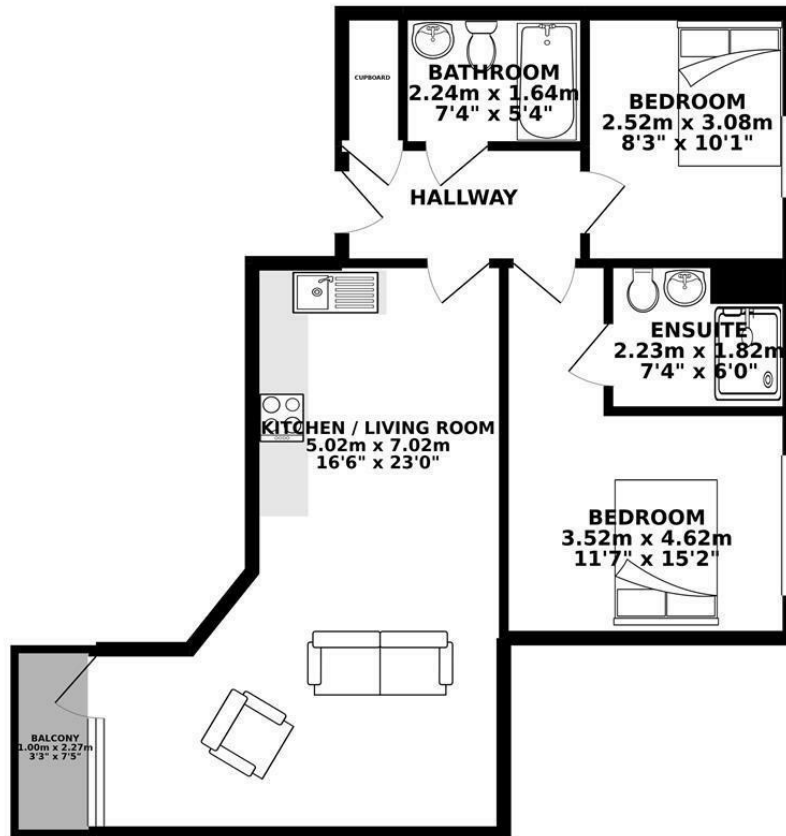
La Salle is a secure development with two lift facilities, 24 hour security, communal cleaners and a location less than 0.2 miles from all city centre facilities. Tesco and Primal Gym are within 100 yards and evening parking is available outside on Chadwick Street or by contract in the nearby NCP.

Video viewings available on request

£1,400 Per month

- Huge Living Area
- Quiet Location
- Balcony
- Fully Furnished
- City Centre
- Dishwasher
- Perfect for Summer
- Secure Entry

GROUND FLOOR 59.71 sq. m.
(642.66 sq. ft.)



TOTAL FLOOR AREA: 59.71 sq. m. (642.66 sq. ft.) approx.

Whilst every attempt has been made to ensure the accuracy of the floorplan contained here, measurements of doors, windows, rooms and any other items are approximate and no responsibility is taken for any error, omission or mis-statement. This plan is for illustrative purposes only and should be used as such by any prospective purchaser. The services, systems and appliances shown have not been tested and no guarantee as to their operability or efficiency can be given.
Made with Metropix ©2019

Energy Efficiency Rating		Current	Potential
Very energy efficient - lower running costs			
(92 plus) A			86
(81-91) B			
(69-80) C			
(55-68) D			
(39-54) E			
(21-38) F			
(1-20) G			
Not energy efficient - higher running costs			
England & Wales		EU Directive 2002/91/EC	

Environmental Impact (CO ₂) Rating		Current	Potential
Very environmentally friendly - lower CO ₂ emissions			
(92 plus) A			78
(81-91) B			
(69-80) C			
(55-68) D			
(39-54) E			
(21-38) F			
(1-20) G			
Not environmentally friendly - higher CO ₂ emissions			
England & Wales		EU Directive 2002/91/EC	